


**OUTDOOR SCOREBOARD**  
**8322LS**

Baseball Line Score

AT BAT	4	BALL	3	STRIKE	2	OUT	2	H/E	H				
	1	2	3	4	5	6	7	8	9	10	R	H	E
GUEST	0	0	2	0	1	0					3	7	2
HOME	0	1	0	3	0	0					4	9	1

OVERALL DIMENSION	8' high x 22' wide x 4.7" deep (including built-in mounting channel). LED Team names is 24' Wide.																	
INFORMATION DISPLAYED	Home and Guest Score, Ball, Strike, Out, Innings, Hits, Errors, Hit/Error w/ Position, At Bat. <i>Information may vary depending on variations.</i>																	
DIGITS	16", 12" Bright Red, 7-Segment LEDs.																	
INDICATORS	None.																	
CAPTIONS	White vinyl letters.																	
HORN	Horn not included. External 100 dB Vibrating Horn or 120dB Trumpet Horn are available.																	
CONSTRUCTION	Extruded aluminum frame, .093" thick, mill finish. Faces made from 22ga galvanneal steel with shatter proof polycarbonate windows. Backs made from 22ga galvanized steel.																	
STANDARD COLORS (Custom Colors Available)	<table><tr><td>BLACK</td><td>NAVY</td><td>BLUE</td><td>LIGHT BLUE</td><td>PURPLE</td><td>BURGUNDY</td><td>RED</td><td>FOREST GREEN</td><td>GREEN</td></tr></table> <p>Black, Navy, Blue, Light Blue, and Red have a Kynar® finish, other standard and custom colors are powder coated or painted enamel.</p>									BLACK	NAVY	BLUE	LIGHT BLUE	PURPLE	BURGUNDY	RED	FOREST GREEN	GREEN
BLACK	NAVY	BLUE	LIGHT BLUE	PURPLE	BURGUNDY	RED	FOREST GREEN	GREEN										
ELECTRONICS	100% solid state, microprocessor controlled system.																	
SERVICING	Front access for ease of servicing. Plug in modules for ease of replacement.																	
MICROPROCESSOR CONTROL CONSOLE	<div></div> <p>Sold separately. Extruded Aluminum, high impact low profile microprocessor control console, latest state of the art, user friendly. Size: 13.25" wide x 5" high x 9" deep. Weight: 6 lbs. Microprocessor to be supplied with 25 feet of cable (hardwire). Microprocessor control console with membrane keyboard provides for direct entry of all information. Radio Control is available.</p>																	
JUNCTION BOX	One outdoor rated junction box, 5" x 3" with cover and ethernet cable. (Hardwire)																	
DATA CABLE	Twisted pair, direct burial, RJ45 Connectors (Hardwire).																	
POWER REQUIREMENTS	115/230 VAC. 50/60 Hz. Minimum one 20A circuit is recommended.																	
INSTALLATION	All standard variations typically installed on two posts. Mounting kits are supplied with scoreboard. <i>NOTE: Number of posts must be determined locally by licenced engineer.</i>																	
WEIGHT	<b>Base Model:</b> Net 815 lbs / Shipping 1084 lbs. <b>TN Models:</b> Net Net 885 lbs / Shipping 1200 lbs.																	
WARRANTY	Five year guarantee against defects in materials and workmanship. Factory repair service for parts in warranty. Union label. UL Certified.																	

**STANDARD VARIATIONS - Add suffix to model number in order that they appear below (see examples on next page)**

<b>Model + L</b>	Designated logo area in place of the AT BAT digits.
<b>Model + TN</b>	9" LED Team Names (8x40 Matrix), console programmable. Adds 2' to the width.
<b>Model + RV2</b>	Radio upgrade. 2.4 GHz spread spectrum, 1500' expected range.

This page shows samples of boards within the 8322LS family. Not all "Standards" are shown. Boards that fall outside of these options will be considered custom and will require additional engineering.

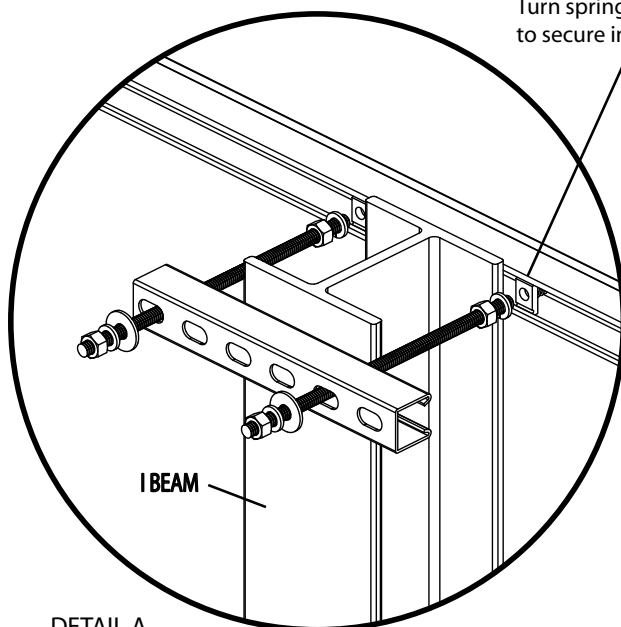
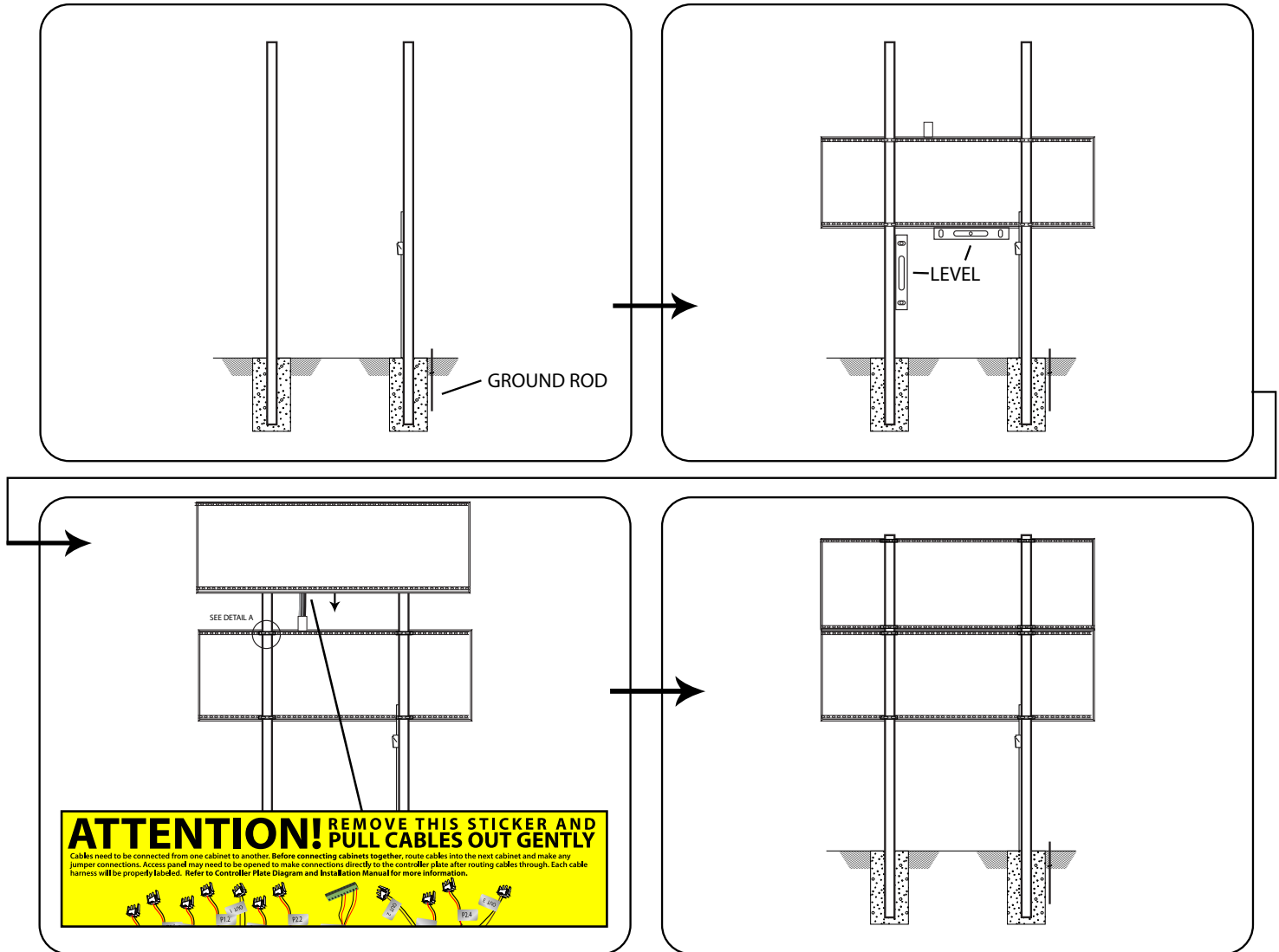
**8322LS** - 8' high x 22' wide, typically installed on 2 posts.

**8322LSL** - 8' high x 22' wide, typically installed on 2 posts.

**8322LSTN** - 8' high x 24' wide, typically installed on 2 posts.

### Typical Double-Cabinet Scoreboard Installation Illustration

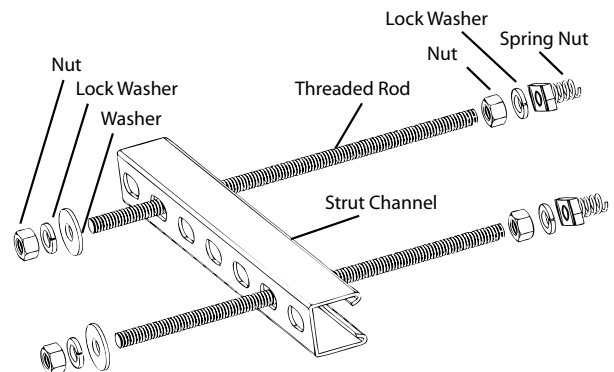
NUMBER OF POLES SHOWN ONLY FOR REFERENCE. MUST BE DETERMINED LOCALLY BY LICENCED ENGINEER.



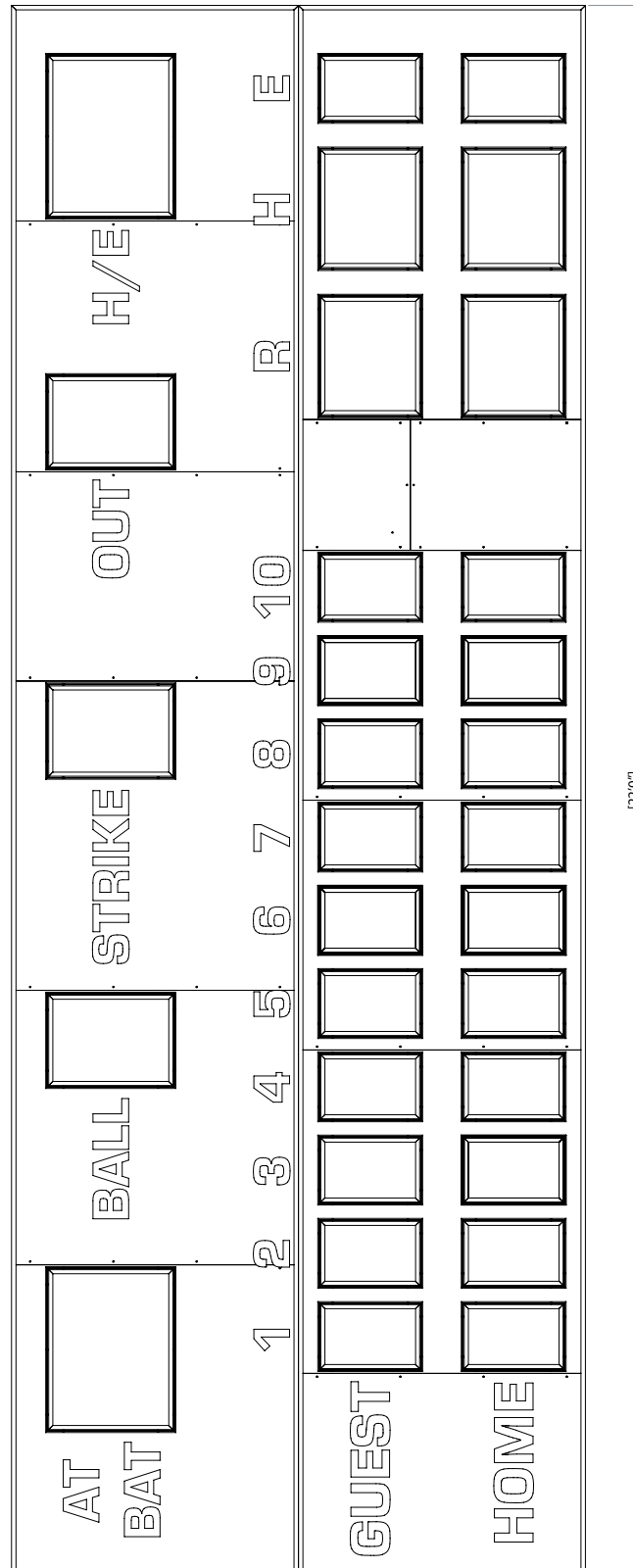
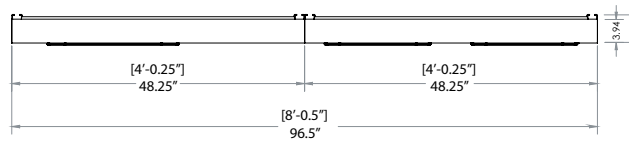
Turn spring nuts clockwise  
to secure into strut channel.

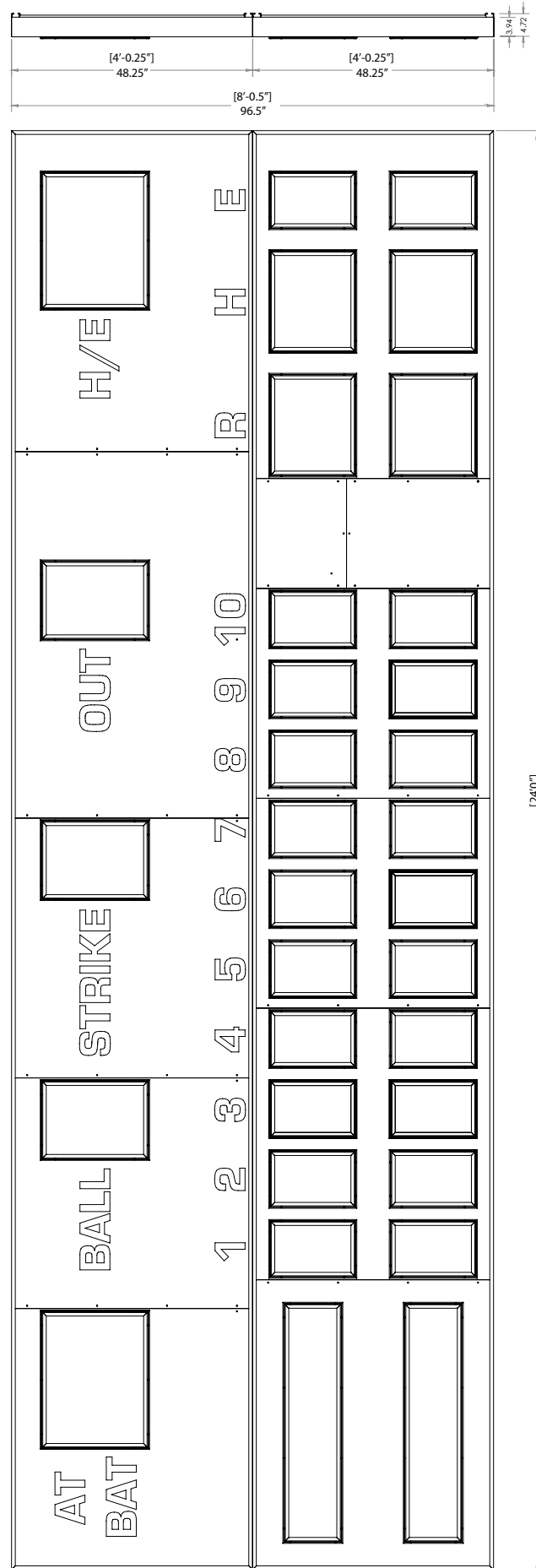
#### Mounting Kit

Quantity of kits depends on board and number of poles required.  
Installed at every point where a pole and a strut channel intersect.  
*Local ordinances, soil conditions and wind load requirements may require additional structure.*



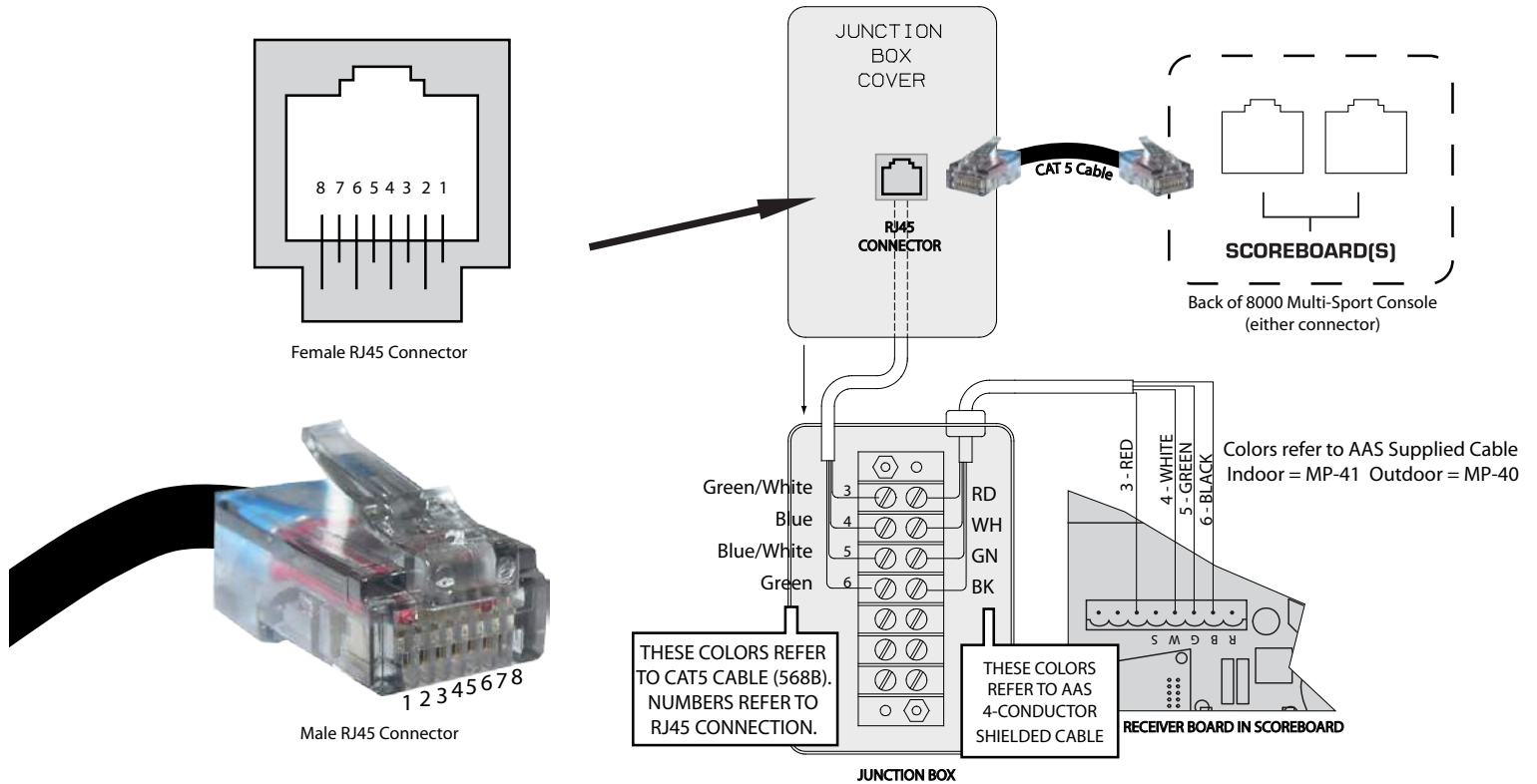
DETAIL A.  
Pressure hold scoreboard cabinets to poles.  
Secure with weld.





# Hardwire Scoreboard Wiring

## With a Standard Junction Box



# Wiring a Supplemental Display

## With a Single Junction Box

